

VenturePark Beachline

7650 AMSTERDAM DRIVE, ORLANDO, FLORIDA | WWW.VENTUREPARKBEACHLINE.COM

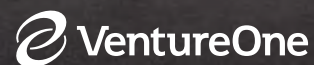


[CLICK HERE TO VIEW
PROPERTY WEBSITE](#)



[CLICK HERE TO VIEW
MARKETING VIDEO](#)

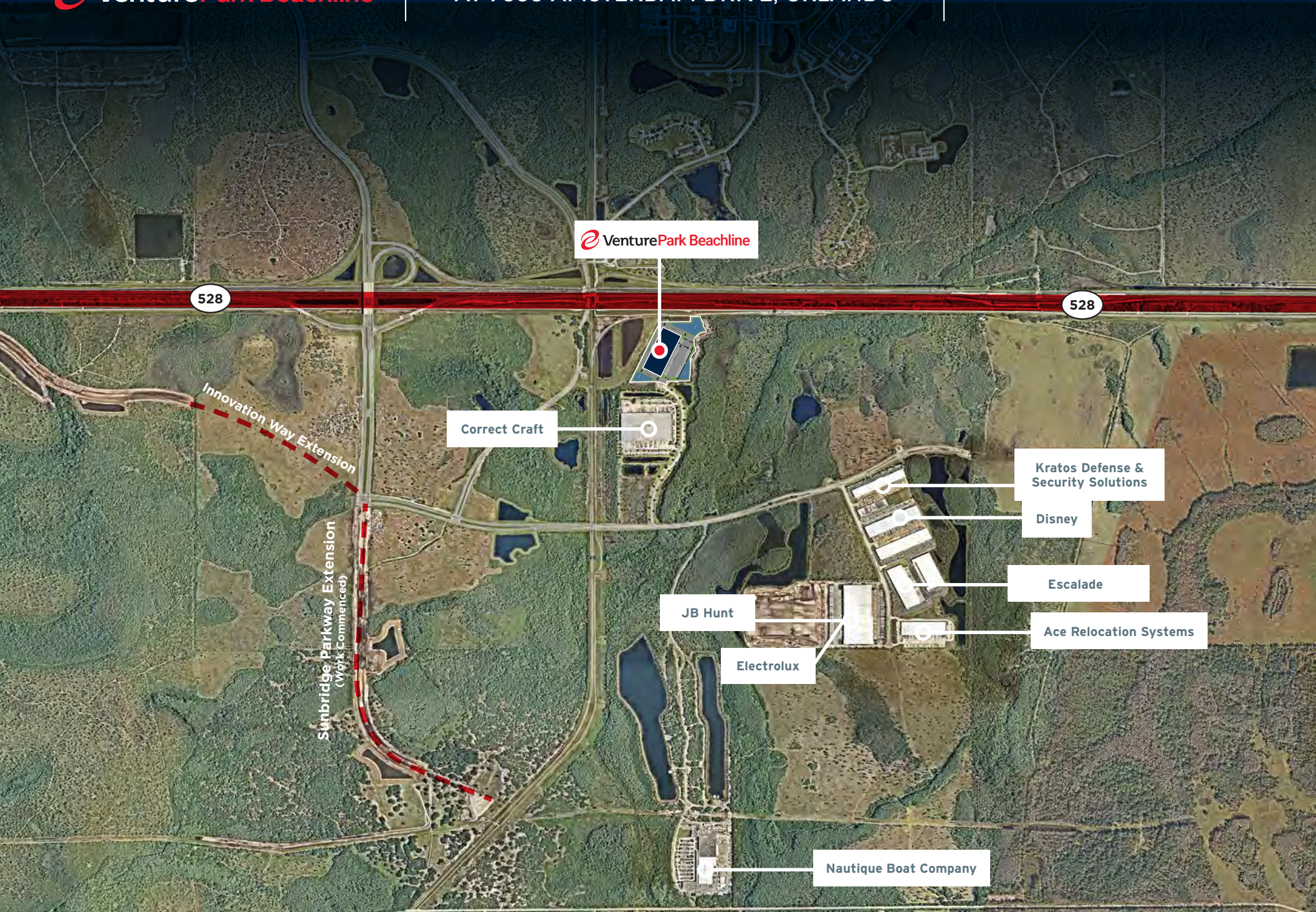
220,853 SF ORLANDO INDUSTRIAL LOGISTICS CENTER FOR LEASE | AVAILABLE FOR IMMEDIATE OCCUPANCY





HIGHLIGHTS

ADDRESS	7650 Amsterdam Dr. Orlando, FL 32832
SQUARE FOOTAGE	220,853 SF
OFFICE SF	2,487 SF (100% Complete)
SITE SIZE	16.7 Acres
CLEAR HEIGHT	36'
DOCKS	35 (9' x 10') – 23 of which incl levelers
DRIVE-INS	2 (12' x 14')
PARKING RATIO	1.1/1,000 SF
TRAILER STALLS	53 Stalls
COLUMN SPACING	56' x 50' Typical 60' Speed Bay
BUILDING DIMENSIONS	308' x 709'
TRUCK COURT	230'
FIRE SUPPRESSION	ESFR
POWER	2,000 Amps (3-Phase) - Expandable
LIGHTING	LED to 30 fc
AVAILABILITY	Immediate Occupancy



 VenturePark Beachline

528

528

Innovation Way Extension

Sunbridge Parkway Extension
(W/1st Commenced)

Correct Craft

Kratos Defense & Security Solutions

Disney

Escalade

Ace Relocation Systems

JB Hunt

Electrolux

Nautique Boat Company



 VenturePark Beachline

528

528

Meridian Parks
(Mattamy)

STARWOOD

2,560 Acre Mixed-Use Development
4,000 Single-Family + 2,000 Multifamily Home
500,000 SF Office/Retail

Storey Park
(Lenar)

LAKE NONA

417

The Oaks at Moss Park
(Lenar)

Sunbridge Parkway Extension
(Work Commenced)

Correct Craft

Electrolux

Kratos Defense & Security Solutions

Disney

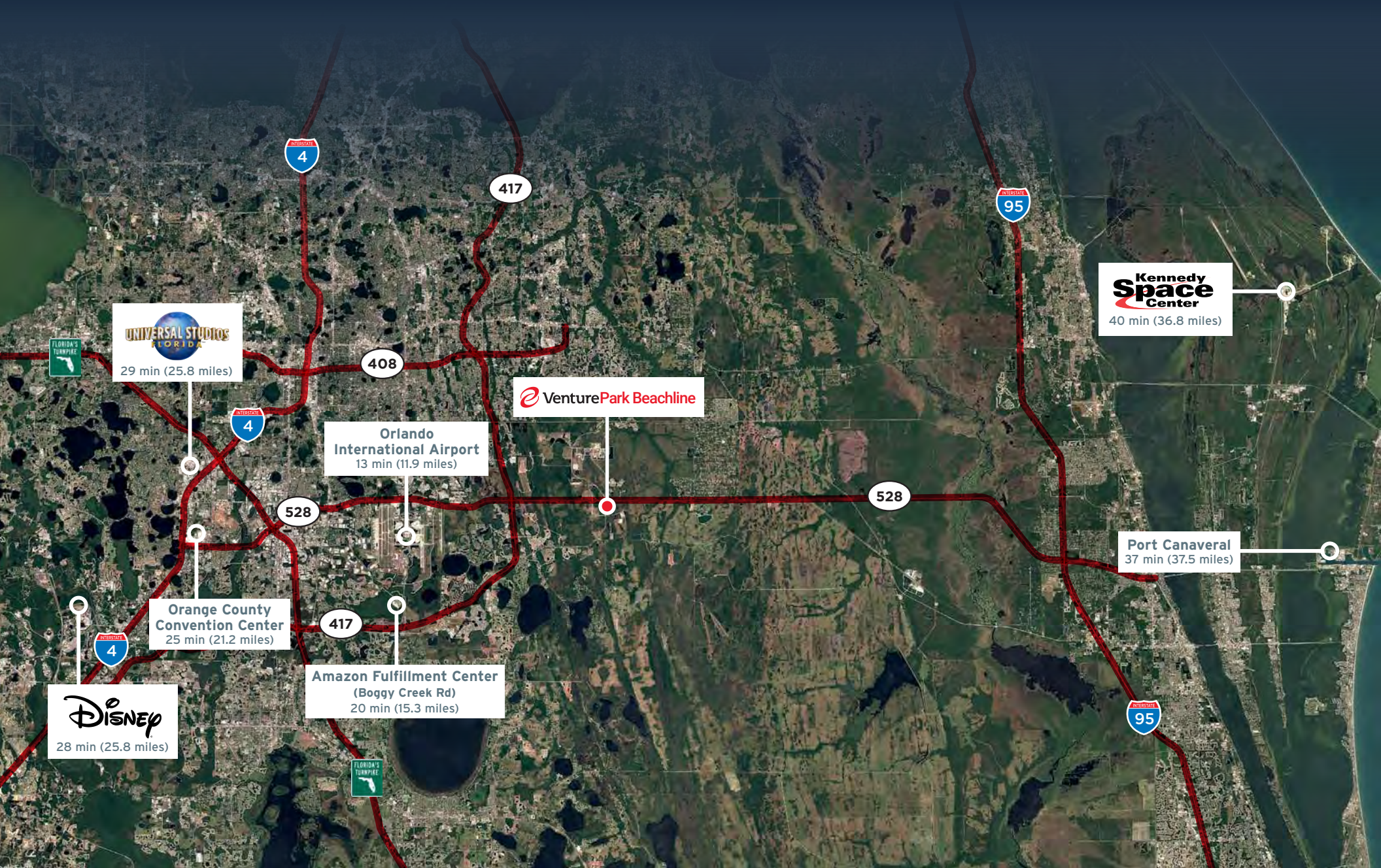
Escalade

Ace Relocation Systems

JB Hunt

Nautique Boat Company

SUNBRIDGE




29 min (25.8 miles)

Orlando International Airport
13 min (11.9 miles)

Orange County Convention Center
25 min (21.2 miles)


28 min (25.8 miles)

Amazon Fulfillment Center (Boggy Creek Rd)
20 min (15.3 miles)

 **VenturePark Beachline**

Kennedy Space Center
40 min (36.8 miles)

Port Canaveral
37 min (37.5 miles)

FOR LEASING INFORMATION, PLEASE CONTACT:

Jared Bonshire
Executive Managing Director
(t) +1 407 541 4414
jared.bonshire@cushwake.com

David Perez
Executive Managing Director
(t) +1 407 541 4435
david.perez@cushwake.com

Taylor Zambito
Senior Director
(t) +1 407 541 4409
taylor.zambito@cushwake.com

Ryan Hubbard
Director
(t) +1 407 541 4390
ryan.hubbard@cushwake.com

©2024 Cushman & Wakefield. All rights reserved. The information contained in this communication is strictly confidential. This information has been obtained from sources believed to be reliable but has not been verified. NO WARRANTY OR REPRESENTATION, EXPRESS OR IMPLIED, IS MADE AS TO THE CONDITION OF THE PROPERTY (OR PROPERTIES) REFERENCED HEREIN OR AS TO THE ACCURACY OR COMPLETENESS OF THE INFORMATION CONTAINED HEREIN, AND SAME IS SUBMITTED SUBJECT TO ERRORS, OMISSIONS, CHANGE OF PRICE, RENTAL OR OTHER CONDITIONS, WITHDRAWAL WITHOUT NOTICE, AND TO ANY SPECIAL LISTING CONDITIONS IMPOSED BY THE PROPERTY OWNER(S). ANY PROJECTIONS, OPINIONS OR ESTIMATES ARE SUBJECT TO UNCERTAINTY AND DO NOT SIGNIFY CURRENT OR FUTURE PROPERTY PERFORMANCE.

